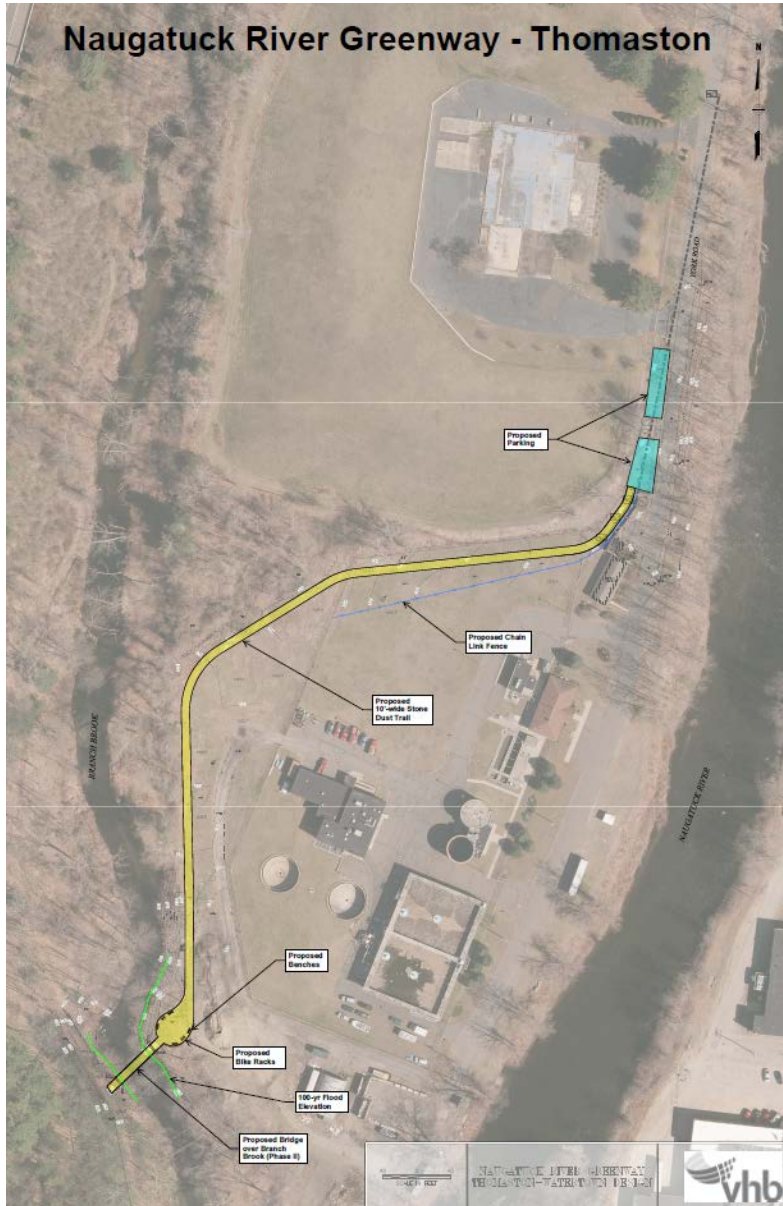


# Public Information Meeting

## Naugatuck River Greenway

### Thomaston and Watertown Design and Construction Project

June 21<sup>st</sup>, 2018  
Thomaston Town Hall  
Meeting Room 1



# Naugatuck River Greenway Thomaston and Watertown Design and Construction Project

This public information meeting is being held to provide residents and stakeholders an opportunity to learn project details, review plans and project timeline, and provide input to project partners to help guide the project going forward.

## **Project Background**

The Towns of Watertown and Thomaston applied for and received grant funding through the Federal Recreational Trails Program administered by the Connecticut Department of Energy and Environmental Protection (DEEP) to design and construct a short section of NRG trail in Thomaston and design critical features along the future NRG route in Watertown. The towns asked NVCOG to manage the grant award and project. Vanasse Hangen Brustlin Inc. (VHB) an engineering and design firm with offices in Wethersfield, CT, was hired to complete the design portion of the project.

The trail section in Thomaston would be on town-owned land adjacent to the water pollution control facility and transfer station. As originally conceived, the trail was intended to end at the old trolley bridge over Branch Brook south of the transfer station. However, an initial engineering assessment of the trolley bridge revealed that a substantial rehabilitation, costing in excess of \$350,000, would be required to safely carry pedestrian and bicycle traffic. As an alternative, a new crossing location was chosen upstream from the trolley bridge on Branch Brook. VHB is investigating new structure types and costs as part of their design work, but the crossing is not funded under this project.

## **Project Details**

### In Thomaston

- Design a trailhead and trail on town property to a crossing of Branch Brook. Design is currently at 30%, and includes the following features:
  - 13 car parking area on Old Waterbury Road
  - A 1,100 foot long, 10 foot wide ADA accessible compacted stone dust trail
  - Relocate existing fence around WPCA to accommodate trail
  - Seating area adjacent to future crossing location
  - Construction cost estimates
- Construction of the Thomaston section of trail
  - Partially Funded
  - Expected Spring 2019

### In Watertown

- Design typical trail cross sections and critical features including:
  - Drainage under the trail
  - Separation from active rail line
  - Separation from Route 8
  - Fall protection where there are steep grades adjacent to the trail
  - Connection to new trailhead and NRG section built as part of the new bus maintenance facility on Echo Lake Road

### New Crossing of Branch Brook

- Structure type assessment
- Construction cost estimates

