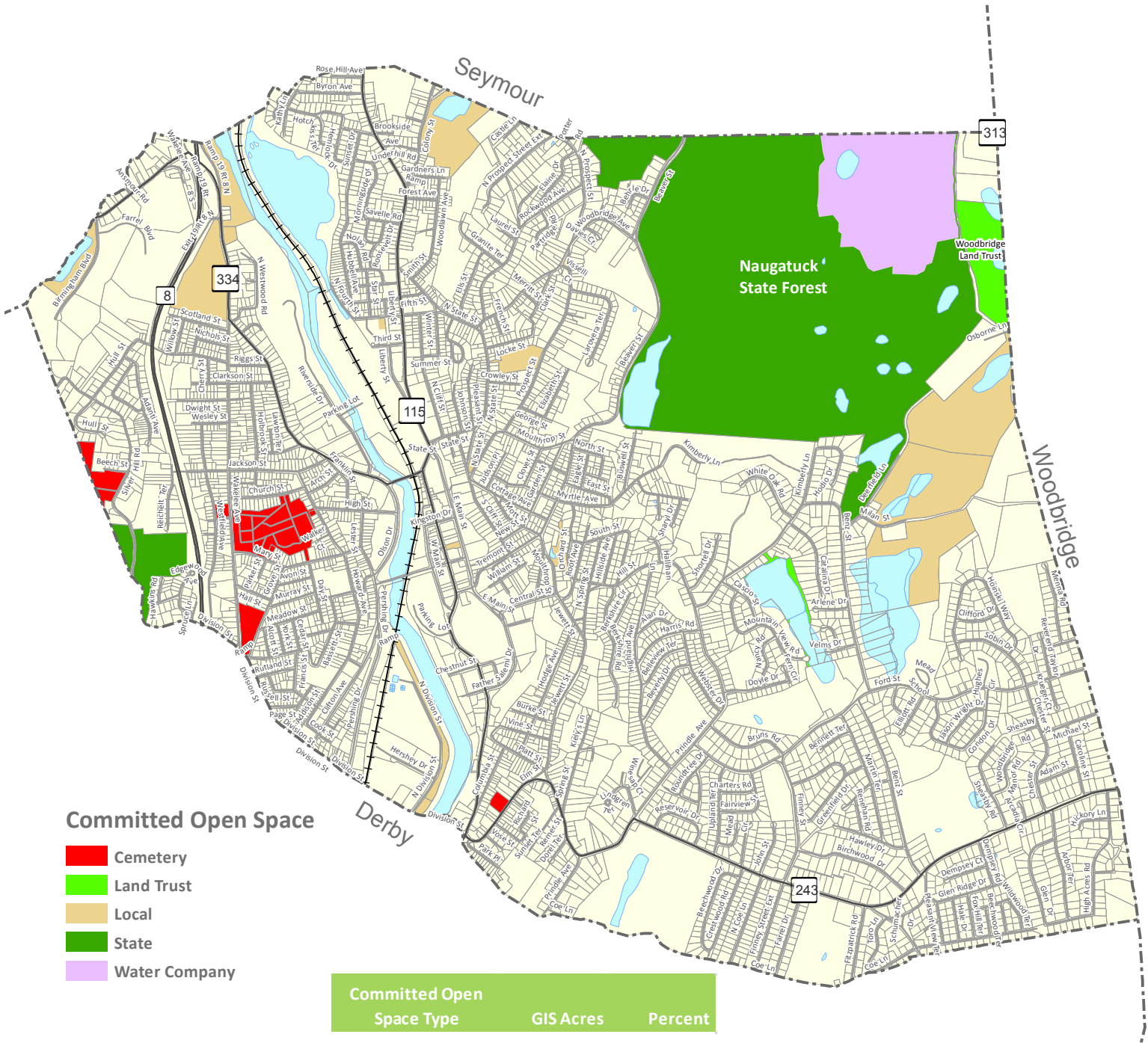


Ansonia Committed Open Space 2017



Committed Open Space

- Cemetery
- Land Trust
- Local
- State
- Water Company

Committed Open Space Type	GIS Acres	Percent
State	476	57.2%
Land Trust (outside)	41	4.9%
Water Company	92	11.1%
Local	189	22.7%
Cemetery	34	4.1%
Open Space:	832	100.0%
Ansonia:	3,989	20.9%

For planning purposes only.
Delineations may not be exact.

Sources:
City of Ansonia
CT 911 Roads: CT DESPP/TeleAtlas
Parcels: New England Geosystems



Revised: 7/25/2017 Document Path: S:\ArcGIS\projects\LandUse\Open_Space\COS\ANSO_COS_2017.mxd



NAUGATUCK VALLEY
COUNCIL of GOVERNMENTS