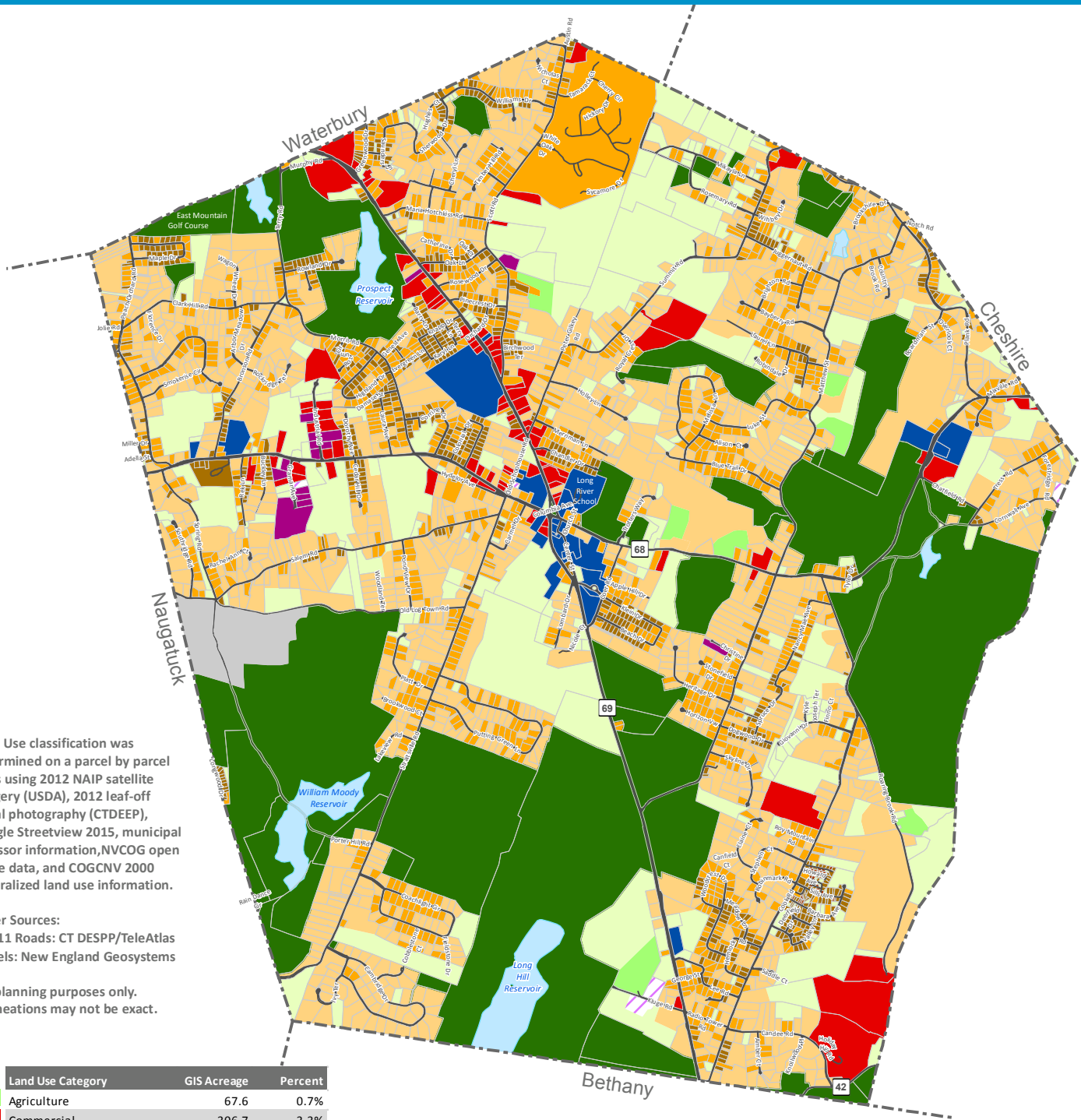


Prospect Land Use 2017



Land Use classification was determined on a parcel by parcel basis using 2012 NAIP satellite imagery (USDA), 2012 leaf-off aerial photography (CTDEEP), Google Streetview 2015, municipal assessor information, NVCOG open space data, and COGCNV 2000 generalized land use information.

Other Sources:
 CT 911 Roads: CT DESPP/TeleAtlas
 Parcels: New England Geosystems

For planning purposes only.
 Delineations may not be exact.

Land Use Category	GIS Acreage	Percent
Agriculture	67.6	0.7%
Commercial	306.7	3.3%
Community Facility	144.2	1.6%
Industrial	36.2	0.4%
Recreational or Open Space	2,483.2	26.9%
Residential - Low	2,633.7	28.6%
Residential - Medium-Low	1,099.0	11.9%
Residential - Medium Density	295.4	3.2%
Residential - High Density	3.2	0.0%
Resource Extraction	88.4	1.0%
ROW	477.1	5.2%
Utilities	12.5	0.1%
Undeveloped	1,416.6	15.4%
Water	155.0	1.7%
Totals:	9,218.8	100.0%

