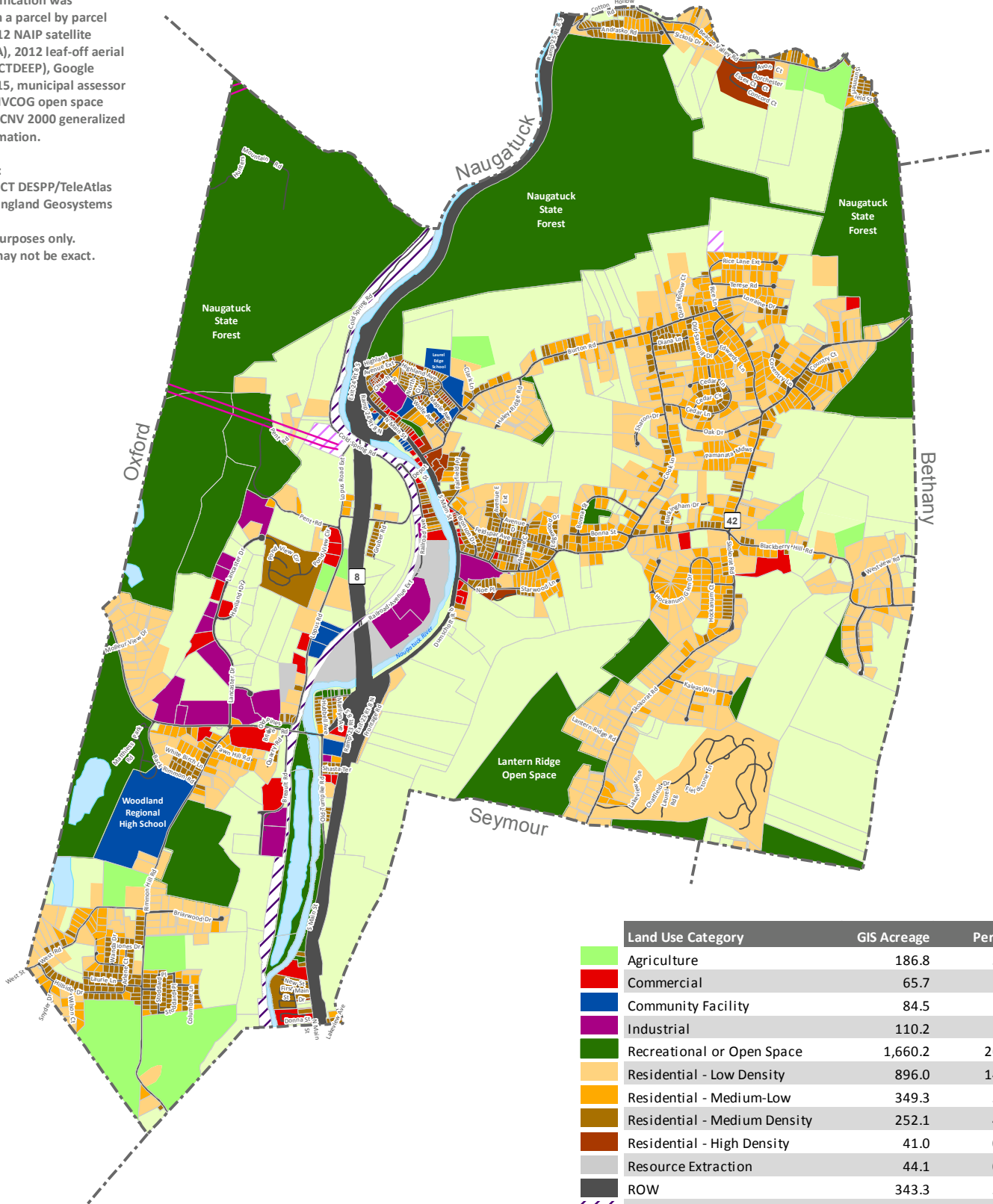


Beacon Falls Land Use 2017

Land Use classification was determined on a parcel by parcel basis using 2012 NAIP satellite imagery (USDA), 2012 leaf-off aerial photography (CTDEEP), Google Streetview 2015, municipal assessor information, NVCOG open space data, and COGCNV 2000 generalized land use information.

Other Sources:
 CT 911 Roads: CT DESPP/TeleAtlas
 Parcels: New England Geosystems

For planning purposes only.
 Delineations may not be exact.



Land Use Category	GIS Acreage	Percent
Agriculture	186.8	3.0%
Commercial	65.7	1.0%
Community Facility	84.5	1.3%
Industrial	110.2	1.8%
Recreational or Open Space	1,660.2	26.4%
Residential - Low Density	896.0	14.2%
Residential - Medium-Low	349.3	5.5%
Residential - Medium Density	252.1	4.0%
Residential - High Density	41.0	0.7%
Resource Extraction	44.1	0.7%
ROW	343.3	5.5%
Transportation	71.5	1.1%
Utilities	12.7	0.2%
Undeveloped	2,057.4	32.7%
Water	120.2	1.9%
Totals:	6,295.0	100.0%



Electric Transmission Lines

