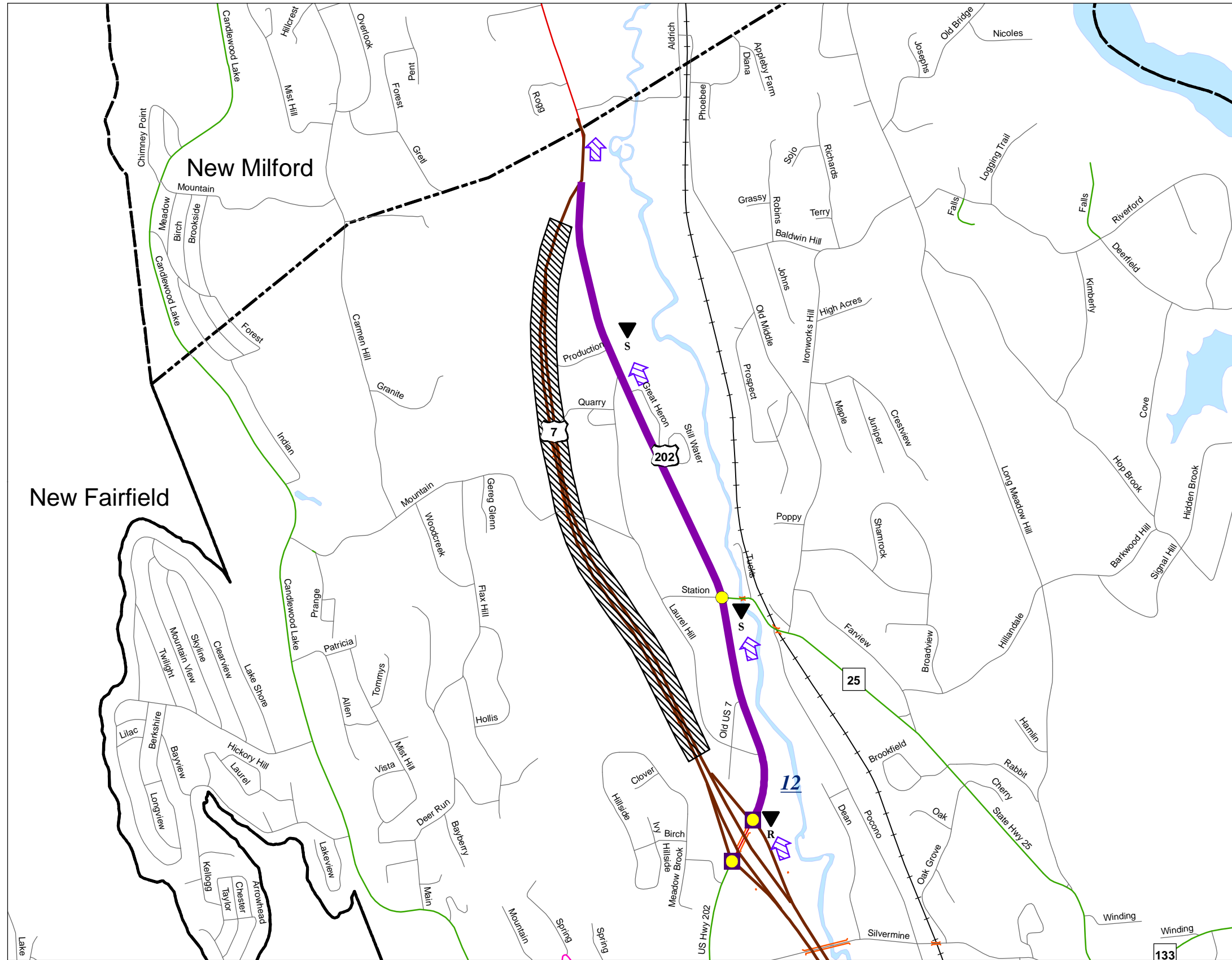


BROOKFIELD ROUTE 7 NB DIVERSION PLAN EXIT 12 TO END OF EXPRESSWAY



<b>TOWN OF BROOKFIELD EXIT 12 TO END</b>		Date August 13, 2010 Rev. September 16, 2010 Rev. Oct 6, 2010													
<b>PRIMARY ROUTE</b> Take Route 7 NB Exit # 12(ramp to US Hwy 202). Right US Hwy 202 (Federal Rd). Continue on US Hwy 202. Merge onto Route 7 NB (End of Expressway).															
<b>SECONDARY ROUTE</b> None															
<b>SPECIAL REQUIREMENTS</b>															
<b>LEGEND</b> <ul style="list-style-type: none"> <li> Closure Location</li> <li> All Vehicle Routing</li> <li> Truck Routing</li> <li> Car Routing</li> <li> Traffic Signal</li> <li> Diversion Route Sign Location</li> <li> Truck Only Diversion Route Sign Location</li> <li> Police Monitor-Signal</li> <li> Police Monitor No Signal</li> <li> All Vehicle Diversion</li> </ul> <b>Roads</b> <ul style="list-style-type: none"> <li> Interstate</li> <li> Other Expressway</li> <li> Principal arterial</li> <li> Minor arterial</li> <li> Major Collector</li> <li> Minor Collector</li> <li> Local Road</li> <li> Bridges</li> </ul>		<b>EMERGENCY CONTACTS</b> STATE Police Troop A: 203-267-2200 D.E.P: 860-566-3338 CT DOT: 1-800-695-0444 TOWN OF BROOKFIELD Police Dept: 203-775-2575 Fire Dept: 203-775-2575 SIGNAL SYSTEM Contact: Brookfield Police Dept 203-775-2575 24 Hours													
L = Left, R = Right, S = Straight		<table border="1"> <tr> <td></td> <td>Left Arrow</td> <td>0</td> </tr> <tr> <td></td> <td>Right Arrow</td> <td>1</td> </tr> <tr> <td></td> <td>Straight Arrow</td> <td>2</td> </tr> <tr> <td></td> <td>Total Signs</td> <td>3</td> </tr> </table>			Left Arrow	0		Right Arrow	1		Straight Arrow	2		Total Signs	3
	Left Arrow	0													
	Right Arrow	1													
	Straight Arrow	2													
	Total Signs	3													
0 0.2 0.4 Miles															