

COGCNV STAFF

Peter Dorpalen, Executive Director
 Samuel Gold, Senior Planner
 Joe Perrelli, Senior Planner
 Pat Gallagher, Regional Planner
 Glenda Prentiss, GIS Coordinator
 Aaron Budris, Planning Assistant, GIS
 Lauren Rizzo, Administrative Assistant
 Patricia Bauer, Financial Manager

COUNCIL OF GOVERNMENTS

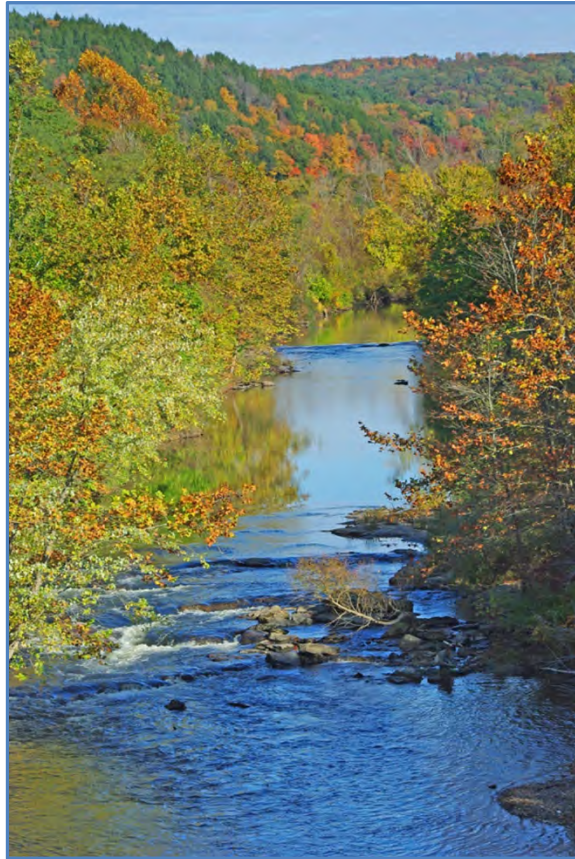
Municipality	COGCNV Member	Alternate
Beacon Falls	Gerard Smith	Dominick Sorrentino
Bethlehem	Jeff Hamel	Ellen Samoska
Cheshire	Timothy Slocum	Michael Milone
Middlebury	Edward St. John	Joseph Salvini
Naugatuck	Robert Mezzo	Tamath Rossi
Oxford	George Temple	Joanne Pelton
Prospect	Robert Chatfield	Tom Galvin
Southbury	Edward Edelson	Carol Hubert
Thomaston	Edmond Mone	Roger Perrault
Waterbury	Neil O'Leary	Ronald Pugliese
Watertown	Raymond Primini	Charles Frigon
Wolcott	Thomas Dunn	Vacant
Woodbury	Gerald Stomski	Barbara Perkinson

REGIONAL PLANNING COMMISSION

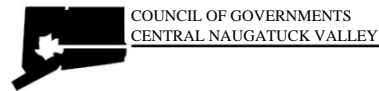
Municipality	RPC Members
Beacon Falls	David Chadderton, Richard Minnick
Bethlehem	Maria Hill, Ellen Samoska
Cheshire	Martin Cobern
Middlebury	Mary Barton, Ken Long
Naugatuck	Anthony Malone, Joseph McEvoy
Oxford	Harold Cosgrove
Prospect	Gil Graveline
Southbury	Leslie Maclise-Kane, Nancy Clark
Thomaston	Robert Flanagan, Bill Guerrero
Waterbury	Geoffrey Green, James Sequin
Watertown	Ruth Mulcahy, Rosalie Loughran
Wolcott	Steven Bosco, Cathe Sherman
Woodbury	Martin Overton

As of January 2013

Annual Report 2011-2012



Naugatuck River, Thomaston. Photo courtesy of Rivers Alliance



COUNCIL OF GOVERNMENTS
 CENTRAL NAUGATUCK VALLEY
 49 Leavenworth Street, Suite 303
 Waterbury, CT 06702
 Phone: 203-757-0535
 Fax: 203-756-7688
 Email: cogcnv@cogcnv.org
 Website: www.cogcnv.org

**Beacon Falls Bethlehem Cheshire
 Middlebury Naugatuck Oxford Prospect
 Southbury Thomaston Waterbury
 Watertown Wolcott Woodbury**



Long Meadow Pond Brook ERT Field Review. Photo courtesy of CT ERT

The Council of Governments (COGCNV) is the regional planning organization for the Central Naugatuck Valley Region. The CNVR, consisting of 13 municipalities in the greater Waterbury area, is one of the 15 state-designated planning regions in Connecticut. The mayors and first selectmen of the member towns make up the Council. A Regional Planning Commission, with two appointed representatives from each town, serves as the planning advisory group to COGCNV. COGCNV will be relocating to a new office on 49 Leavenworth Street, Suite 303 in Waterbury in February 2013.

REGIONAL PLANNING

Land Use Planning and Referrals

COGCNV coordinated regional involvement in the planning process for Connecticut's new Conservation and Development Policies Plan, including holding a planners workshop and a public hearing, presenting the draft plan to planning and zoning commissions, and submitting comments and updated maps for the draft State Plan to the Office of Policy and Management. Staff also assisted Southbury, Beacon Falls, and Thomaston with their new plans of conservation and development. In April 2012, staff participated in an ERT field review of the Long Meadow Pond Brook in Naugatuck.

Under state statutes, COGCNV staff reviews proposed zoning text and map changes that affect property within 500 feet of municipal boundaries and subdivisions which touch or cross town lines. Last year, COGCNV received 50 referrals and responded to 10.

Regional Animal Shelter Study

The towns of Beacon Falls, Bethlehem, Middlebury, Naugatuck, Prospect, Southbury, and Woodbury would like to establish a regional facility to reduce their municipal animal sheltering costs. COGCNV submitted an OPM Regional Performance Incentive Proposal to conduct a study to evaluate site and management options for a regional facility in sufficient detail to enable the participating towns to move forward with the study's preferred recommendation. Grant award is anticipated in August 2012.

Economic Development

COGCNV refers business requests from the state Economic Resource Center to local economic development commissions and coordinators. Staff tracks economic trends and, with GIS mapping, the location of major employers, industrial and commercial areas, and other economic development information. COGCNV is seeking funding for a new regional economic strategic plan.

Regional Data

COGCNV provides census and other statistical information to municipal, non-profit, and private organizations in a variety of forms, including its website. An updated *Profile of the CNVR*, which presents Census 2010 and American Community Survey 2005-2009 5-year estimates, was distributed to municipal officials in the region. American Community Survey 2006-2010 five-year estimates data were downloaded and compiled when they became available in December 2011.

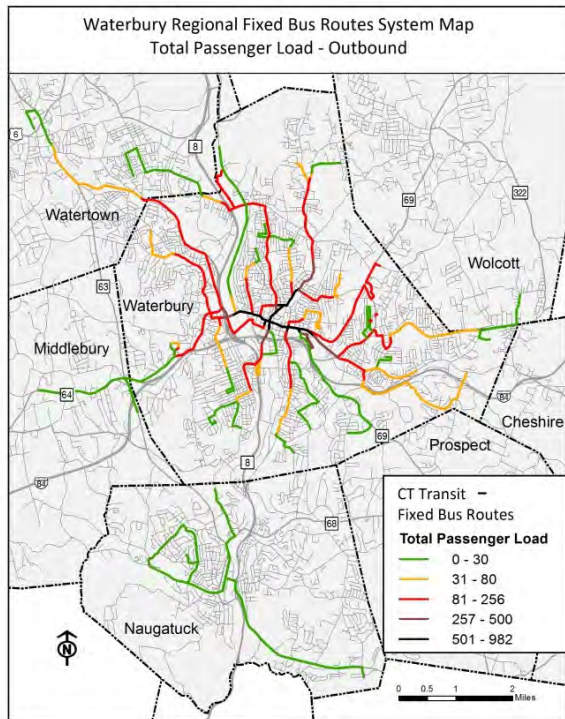
HHW and Electronics Recycling

Household Hazardous Waste (HHW) collections were held in Waterbury, Middlebury, and Woodbury. A total of 1,171 vehicles brought in 75,500 pounds of hazardous waste, including paint, pesticides, and other flammable or corrosive materials. COGCNV staff worked with the Connecticut Resources Recovery Authority to organize three consumer electronics recycling events in Watertown and Southbury. Residents from CNVR municipalities disposed of over 42,300 pounds of electronics, including televisions, computers, and monitors during the three events.

EMERGENCY PLANNING

COGCNV continued its role as the fiduciary agent in CT Department of Emergency Management and Homeland Security Region 5. Items purchased for Region 5 included license plate readers for law enforcement, ham radio equipment for local emergency operations centers, and Cambro feeding system equipment for shelters throughout the region. As of August 1, 2012, the Litchfield Hills Council of Elected Officials took over as the fiduciary agent for Region 5.

Staff assisted in submitting applications for an update of local Pre-Disaster Mitigation plans under a CT DEEP grant and FEMA's Hazard Mitigation Grant that followed disaster declarations in 2011. Municipalities applied to update their plans under three separate grants. Each grant will be managed by a single municipality.



Waterbury Bus Ridership Map

GEOGRAPHIC INFORMATION SYSTEMS (GIS)

COGCNV staff compiled a database and map layer of all bus stop signs along the bus routes operated by CT

Transit Waterbury. An updated regional bus system map was prepared showing the cumulative ridership for each bus route. Mapping was also provided for a Regional Water Authority grant, a Hazard Mitigation grant, Waterbury's traffic signal system, and the location of 2012-2015 TIP projects.

Staff performed a region-wide build-out of residential population using buildable land and current zoning. Using CommunityViz, a detailed residential population build-out was completed for Beacon Falls. In addition, COGCNV staff updated its GIS datasets and assisted municipalities with specific GIS requests.

TRANSPORTATION PLANNING

Freight Planning

COGCNV staff identified and mapped motor freight hazards in the region such as low-clearance bridges and high-accident locations, and made recommendations for improvement. Staff also summarized conditions for rail freight and included maps that identified rail-accessible parcels in the region that could attract manufacturers and freight distributors who are interested in an alternative to the state's congested highway system.

Congested Intersection Studies

COGCNV staff initiated the congested signalized intersection study to identify deficiencies in the highway network caused by intersection delay. Staff collected turning movement counts at 9 locations, including several intersections along Route 10 in



Main Street Streetscaping, Southbury, Photo courtesy of Don Antilla



America's Great Outdoors celebration of the Naugatuck River Greenway

Cheshire. Data will be analyzed with a signal timing program. Staff will recommend improvements at these locations based on the signal timing analysis and the analysis of accident data.

Transportation Funding Programs

Staff solicited and ranked new projects for the STP-Urban program, the Local Road Accident Reduction Program, the Congestion Mitigation & Air Quality Program, and the Transportation Enhancement program. Projects consisted of safety and capacity improvements to the highway network, transit enhancements, and greenway trails.

TIP 2012-2015

COGCNV staff updated the four-year Transportation Improvement Program. The TIP is a federally-required four-year funding schedule of highway and transit projects paid for by federal, state, and local funding sources. Some of the projects included in the TIP are the Naugatuck River Greenway trail, the I-84 upgrade in the eastern Waterbury, the reconstruction of Christian Street in Oxford, and the repair of four bridges on the Waterbury Branch Line.

Greenways

The Naugatuck River Greenway was recognized in the America's Great Outdoors (AGO) initiative by the U.S. Department of the Interior as one of the top 101 outdoors projects in the country. COGCNV worked with the National Park Service and the municipalities along the river to coordinate events celebrating the planned

greenway trail. Staff assisted the City of Waterbury in its Waterbury on Wheels event around The Green as part of the AGO celebrations. COGCNV also helped organize the first annual bike to work day in May 2012.

Public Transit

Evening bus service started in October 2011 in Waterbury. Ridership ranges from 700 to 900 riders per night. Paratransit services for people with disabilities were expanded to provide transportation to Southbury, the Gaylord Rehabilitation Hospital, and evening non-ADA paratransit trips outside of Waterbury.

Public Participation Plan / Title VI

COGCNV staff updated the agency's Public Participation Plan to lay out the public involvement process for transportation planning activities. The new plan calls for an increased use of visualization techniques and consideration of the effectiveness of communicating COGCNV activities using social media. In addition, new procedures were put in place to document complaints under Title VI.

